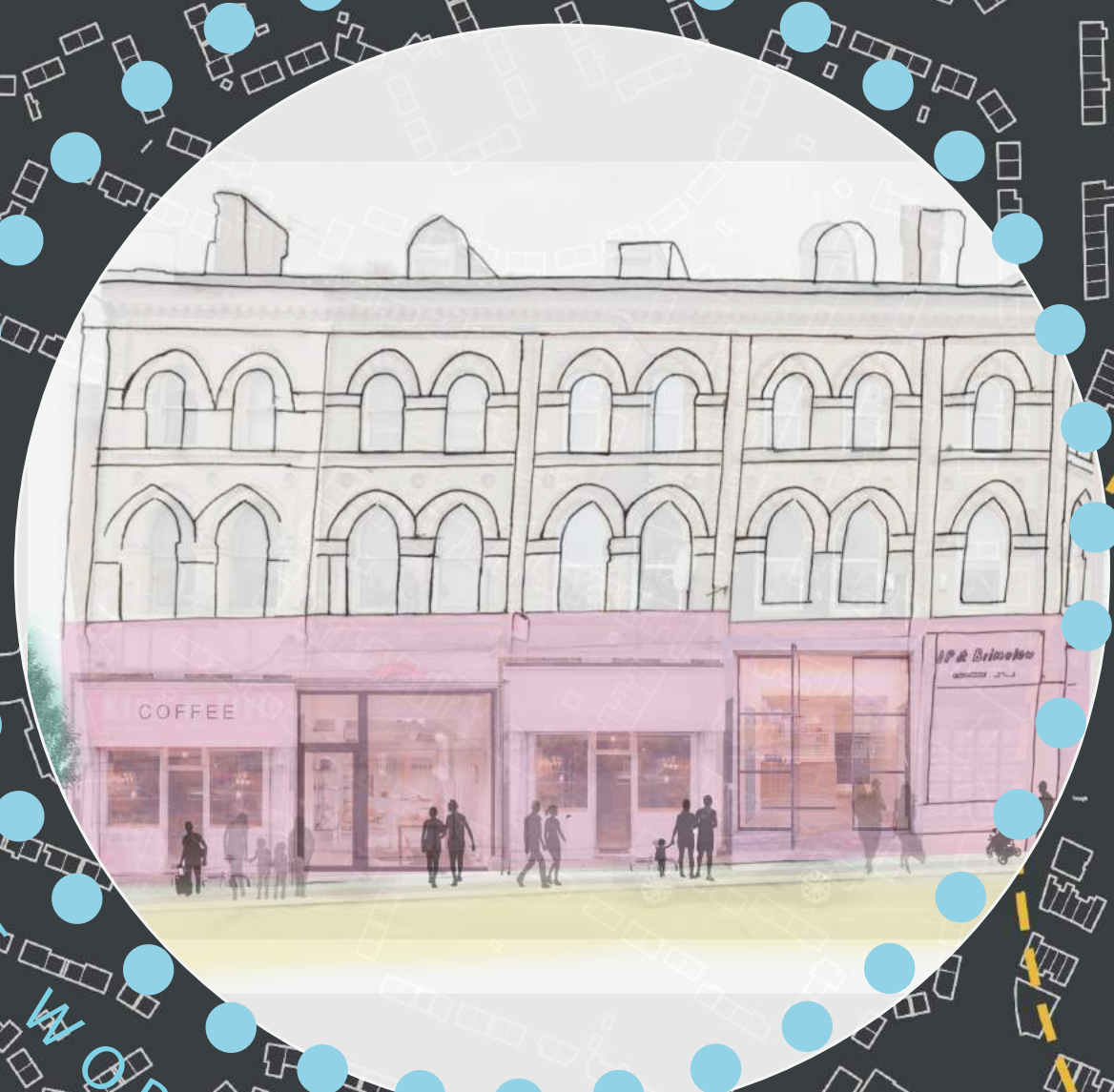
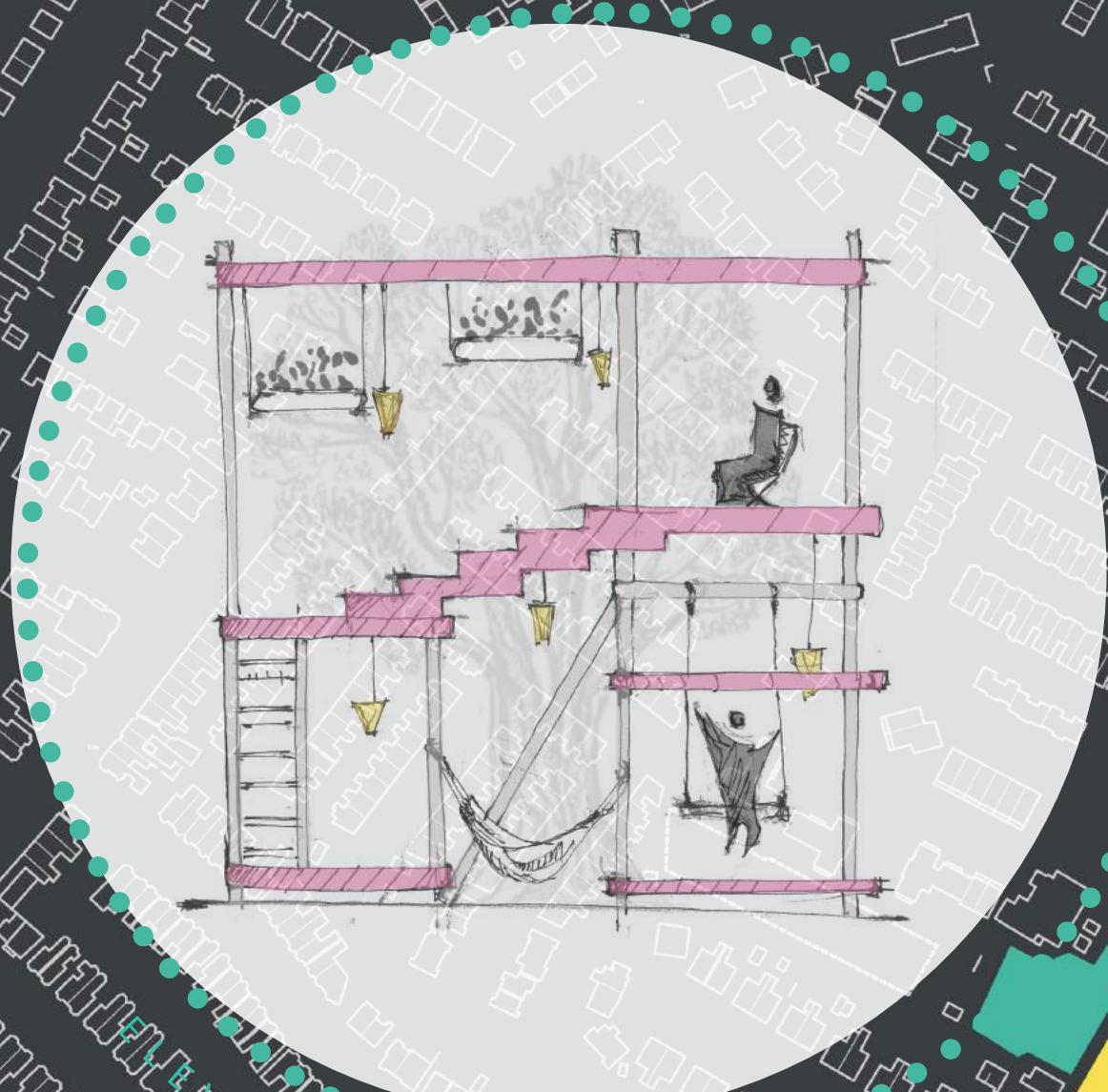


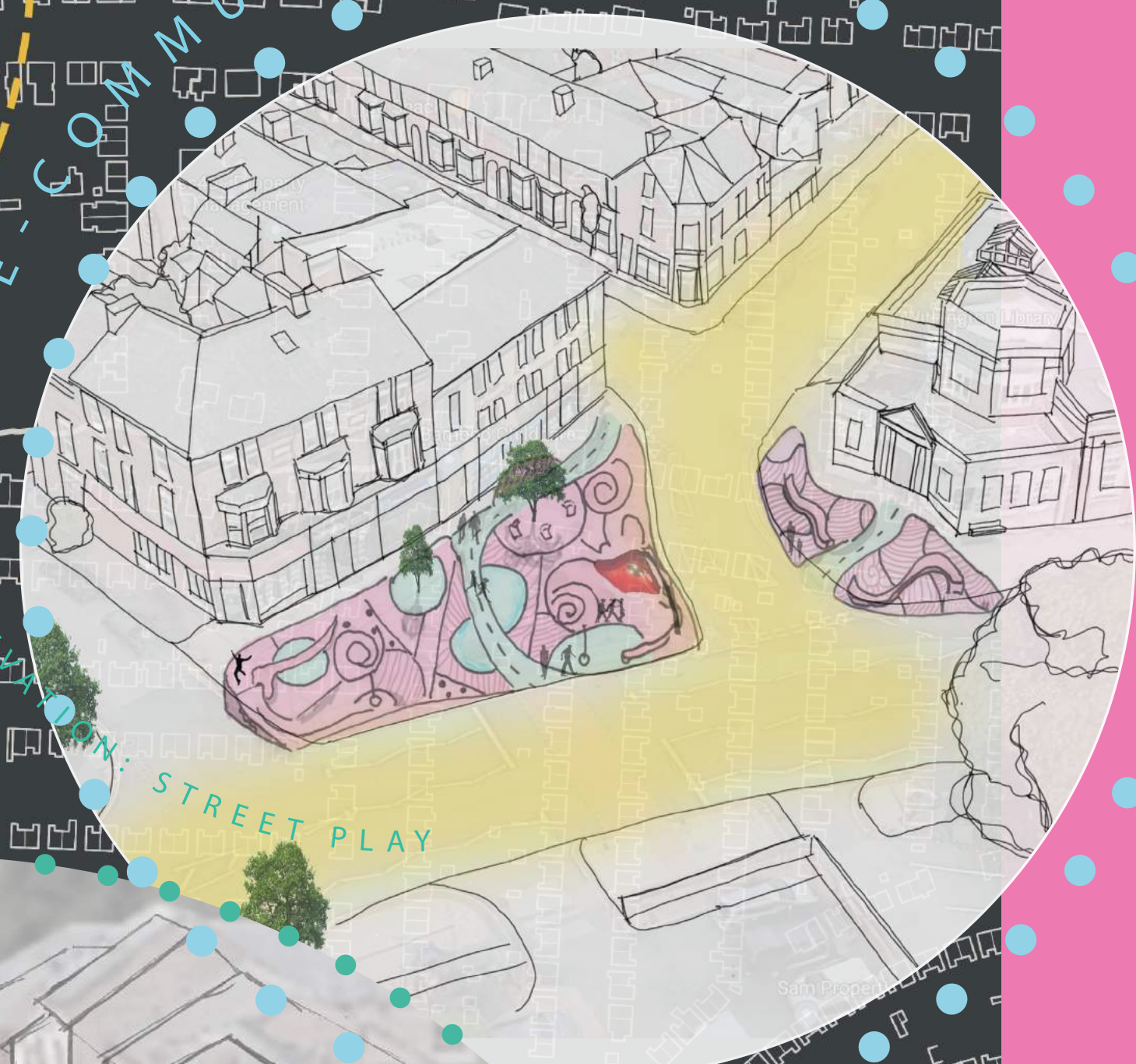
WE ARE WITHINGTON
WE ARE WITHINGTON
WE ARE WITHINGTON



THE WORKSHOPS



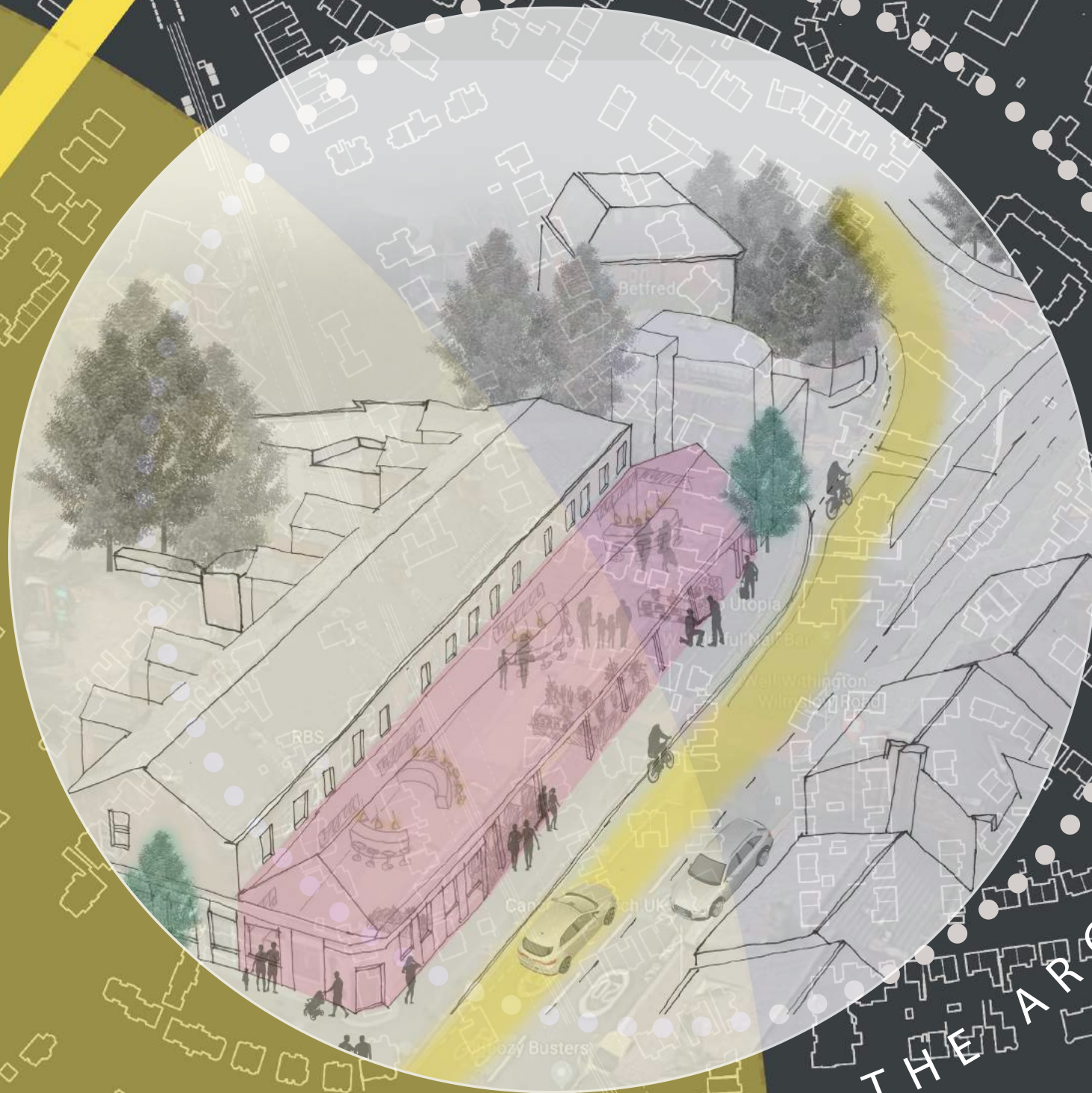
STREET PLAY



STREET PLAY



STREET PLAY



THE ARCADE

GROUP 41

URSULA GONZALEZ NORIEGA | ZAIN KURDI | ORLIN BOGAN MAIER | JEANNE VIALA | SOPHIE IMO | JAMIE LOH JIA MIN | RUXANDA ROTAR | JAMES DONE EVANS | KIMBERLY PEI ZHEN NG | YASIN BIN YAHYA | CLAIRE AINSWORTH | KARL LEUNG | TNUO JIN LIN | JESSICA AMELIA WARD | HO CHEONG | KATE GLYNN | JIM RAPANUT

An underserved limbo town is found between student-centric Followfield and the young professionals of West Didsbury. We pose a question to the identity of Withington. 'What does it mean to ensure a vital and viable district centre that welcomes different communities, where lively chatter and friendly debates take place over a street of transit?'

Four spots were rejuvenated to breathe life back to the retail and high street's current state of re-

pair. Located next to anchor-point buildings such as the library, our scheme sustains and energises local businesses, supports local artistry and cultivates community by introducing categorised multi-programmatic spaces. Imbuing Mancunian qualities of innovation, hard work and enterprise, originality, and the creative heart and soul, we hope to encourage community ownership from students, young professionals and residents while carefully regenerating Withington's neighbourhood.