



FLUX: Lab

MANCHESTER SCHOOL
OF ARCHITECTURE

FLUX:Lab

Atelier FLUX 2023

MANCHESTER SCHOOL
OF ARCHITECTURE

Process in FLUX

Who is the city for?

Who is the future for and why?

How can we change it?

The next generation of city makers will need to find new ways of working, if we are to build a more equal society and mitigate climate change.

Each year at Manchester School of Architecture a cohort of 80 students come together to investigate how to transform their city.

There are two sites in 2023. Mayfield, a post-industrial wasteland in the heart of Manchester, and Manchester's twin city Chemnitz, 2025 European Capital of Culture. The Mayfield brief is set in collaboration with Landsec-U+I, the property developers for the area, and asks the students to take 'presumed' ownerships of sites and develop propositions that might reconnect the area to the thriving city around it.

FLUX is inscriptive practice.

FLUX is temporality.

FLUX is situated practice.

FLUX is open urbanism.





FLUX labs

How can Architecture activate a state of change?

Our 'practice pedagogy' and 'citizen pedagogy' are framed by a series of provocations and delivered through a series of FLUX labs.

FLUX labs challenge students with undertaking a deep immersion in the physical site and its people, incrementally testing and re-testing propositions. The labs are undertaken by all years of study.

These FLUX labs inform and influence students' emerging practice in open and unexpected ways. They are an opportunity for the next generation of city makers to develop their own methods of city making that might better engage citizens in the transformation of their city.

FLUX labs 1–4 were delivered in the Mayfield regeneration area of Manchester City Centre, FLUX lab 5 was delivered in Chemnitz, Germany.

Lab 1: Grit walks (story swapping)

Lab 2: Atmospheres (night walking)

Lab 3: Awakenings (listening to the site)

Lab 4: Taxonomy of lines (drawing on to the site)

Lab 5: Choreographic object (performing found objects)

Garagen Campus, Chemnitz

⤴ Choreographic object, Chemnitz





Entering the abandoned meth lab, Chemnitz

≈ Planning performance route through Garagen Campus







≈ Choreographic object, Mayfield

CHAP
RO

01





Choreographic object, Chemnitz

≈ Discussion with visiting Professor Swati Chattopadhyay



Choreographic object performed through tram network, Chemnitz
≈ 'Listening to Mayfield', collage, Anna Gleis



MANCHESTER HOTEL



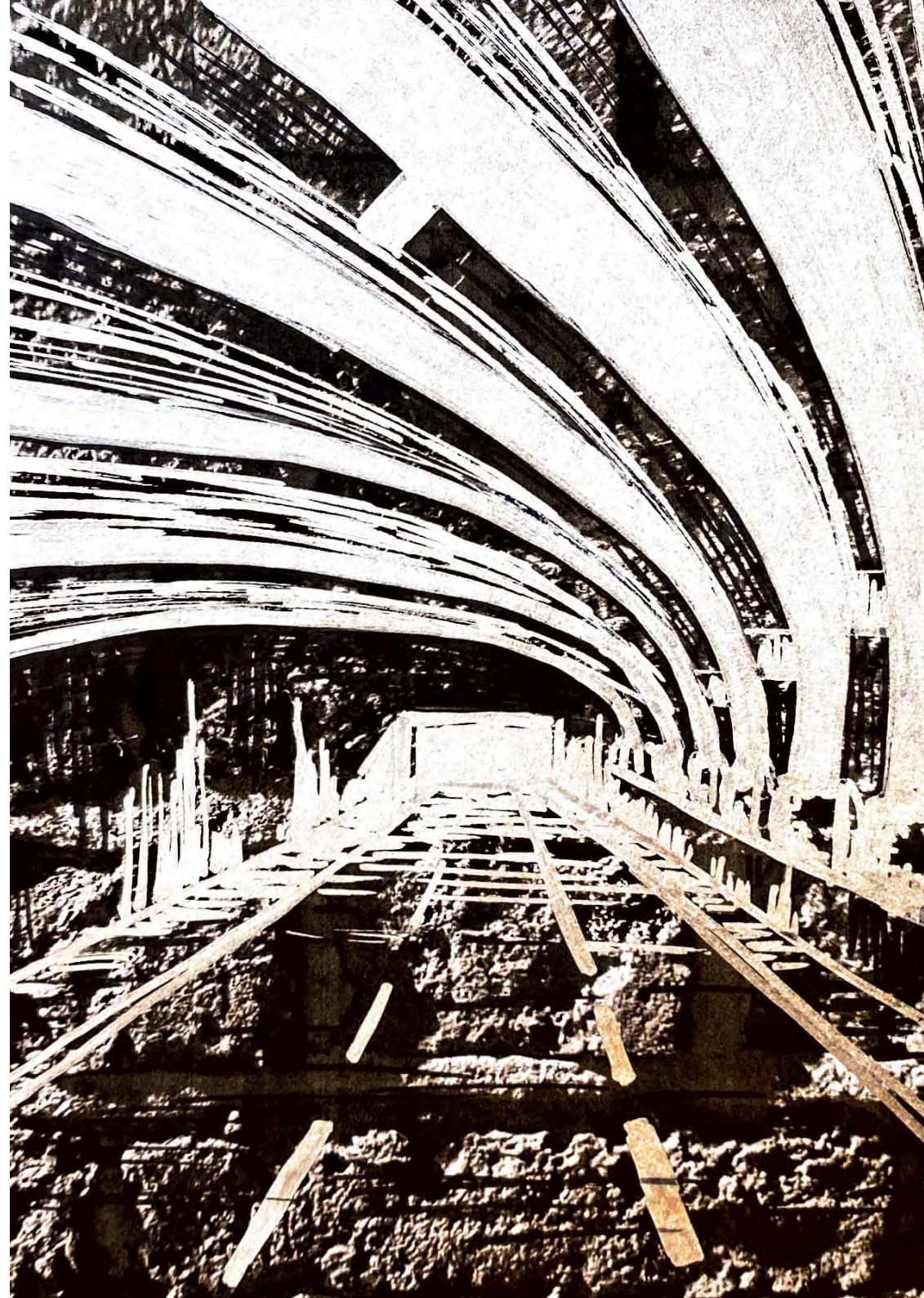


Awakenings, Mayfield

≈ Atmospheres, night walk with Nick Dunn, Mayfield







Atmospheres, collage, Rebecca Skelton
≈ Atmospheres, night walk, Mayfield



Choreographic object, Garagen Campus
≈ In the Bacterial Tunnel, Chemnitz





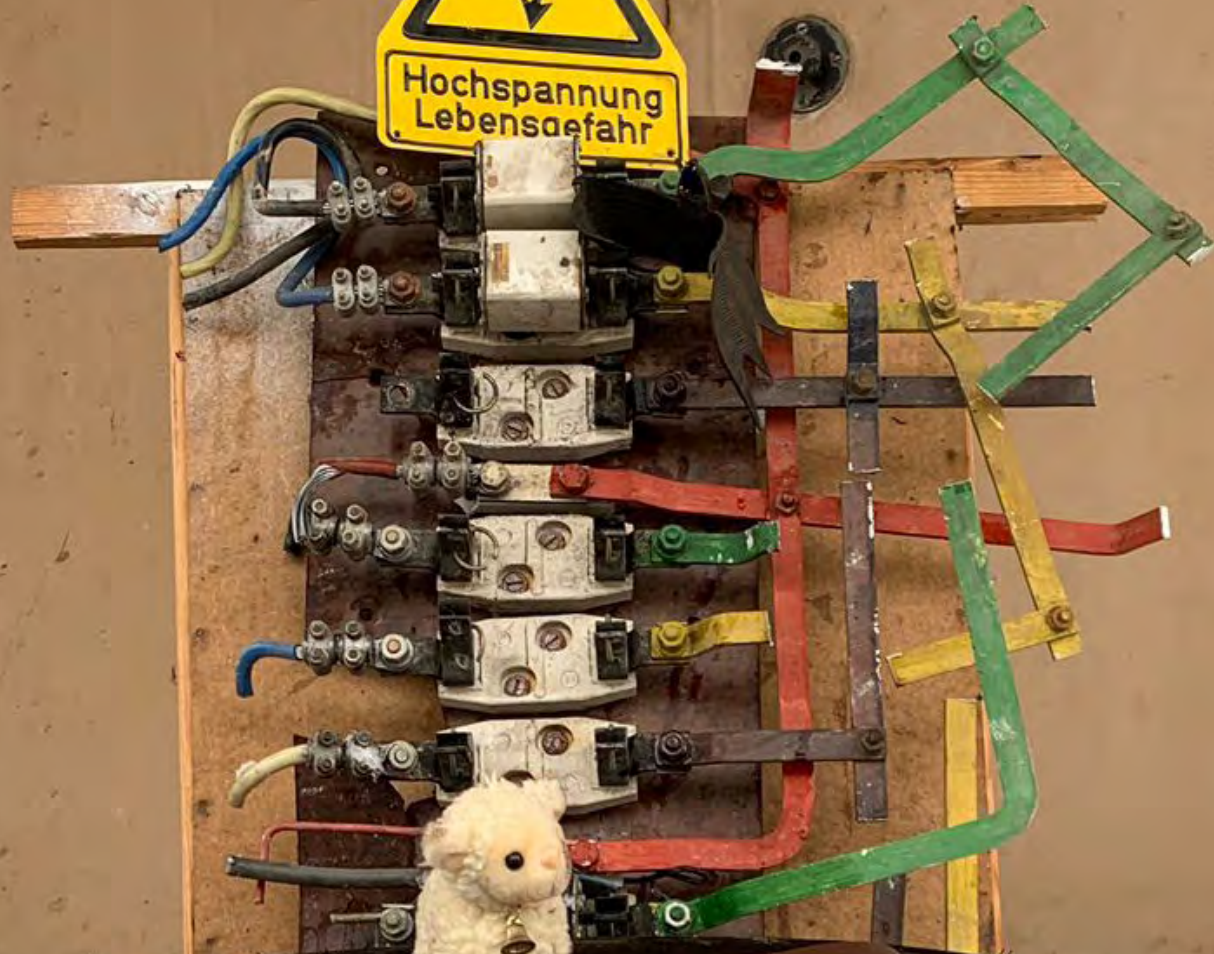




'Moving Garden', Maider Lopez: One thousand houseplants carried through Chemnitz, encountered during field research, July 2022.









Awakenings, Mayfield

⤤ Choreographic object, The Foundry

≈ Garagen Campus



Choreographic object, Garagen Campus
≈ Installing exhibition, FLUX studio



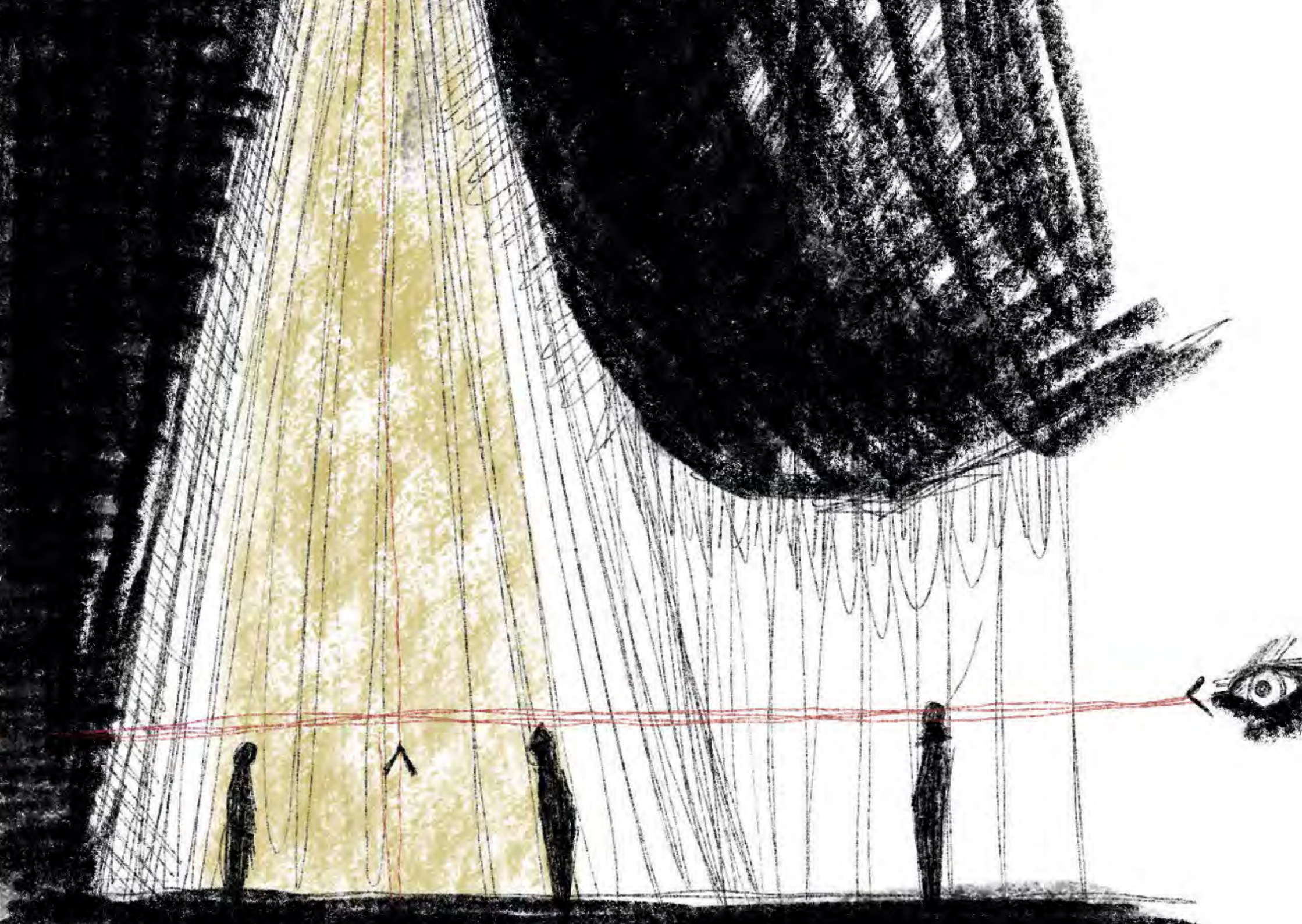




Esplanade



Barricade









Choreographic object, Brühl

≈ Performing choreographic object, bus station, Chemnitz



Karl Marx Platz, Chemnitz

≈ 'Egalitarian Archipelago', Jan Laming





DISCARD
HYPER
NORMAL





Choreographic object, Brühl

≈ 'Moving Garden', Maider Lopez, Chemnitz

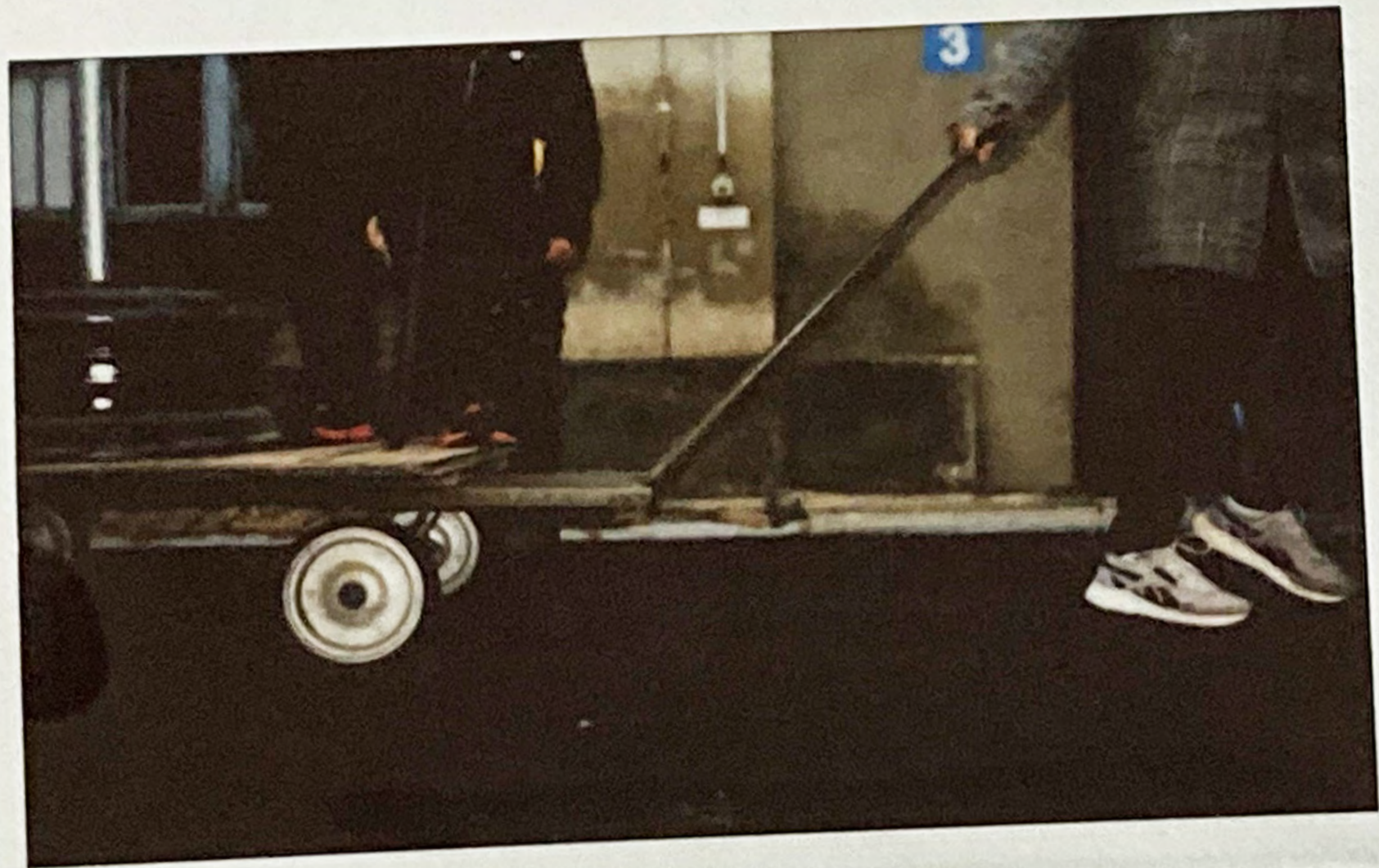
≈≈ Performing choreographic object, bus station, Chemnitz





Haltestelle
verlegt

FERN-BUS-LINIEN
ABFAHRTSSTÄNDE





⤴ Taxonomy of lines, Mayfield
⤵ Taxonomy of lines, Mayfield









Choreographic object, Garagen Campus

⌘ The Foundry, Chemnitz







Abandoned meth lab

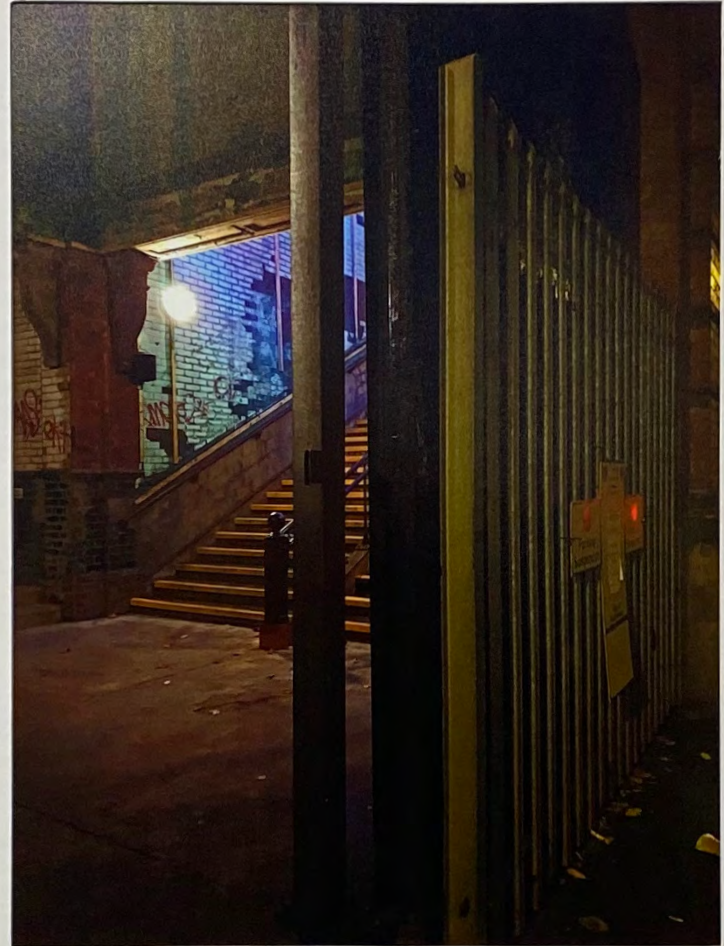
⤤ Choreographic object, Garagen Campus

⤤ Choreographic object, The Foundry



Abandoned meth lab
≈ Awakenings, Mayfield





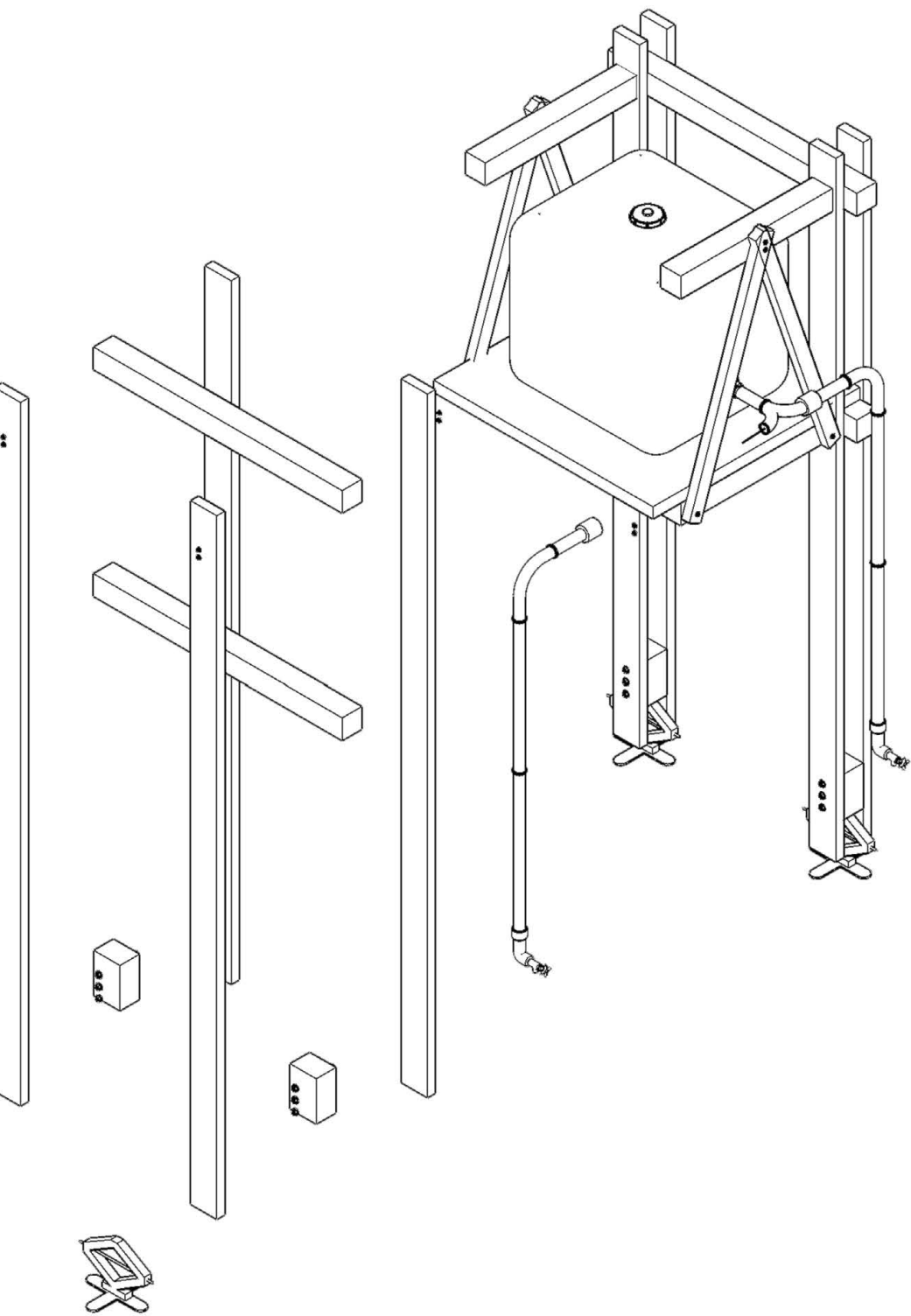


Artist's installation, abandoned meth lab
≈ Immigration Museum, London





'Calico River', Kayla Dabu
≈ 'Calico River', Kayla Dabu







Choreographic object, Brühl

⌘ In conversation with Mayfield developers



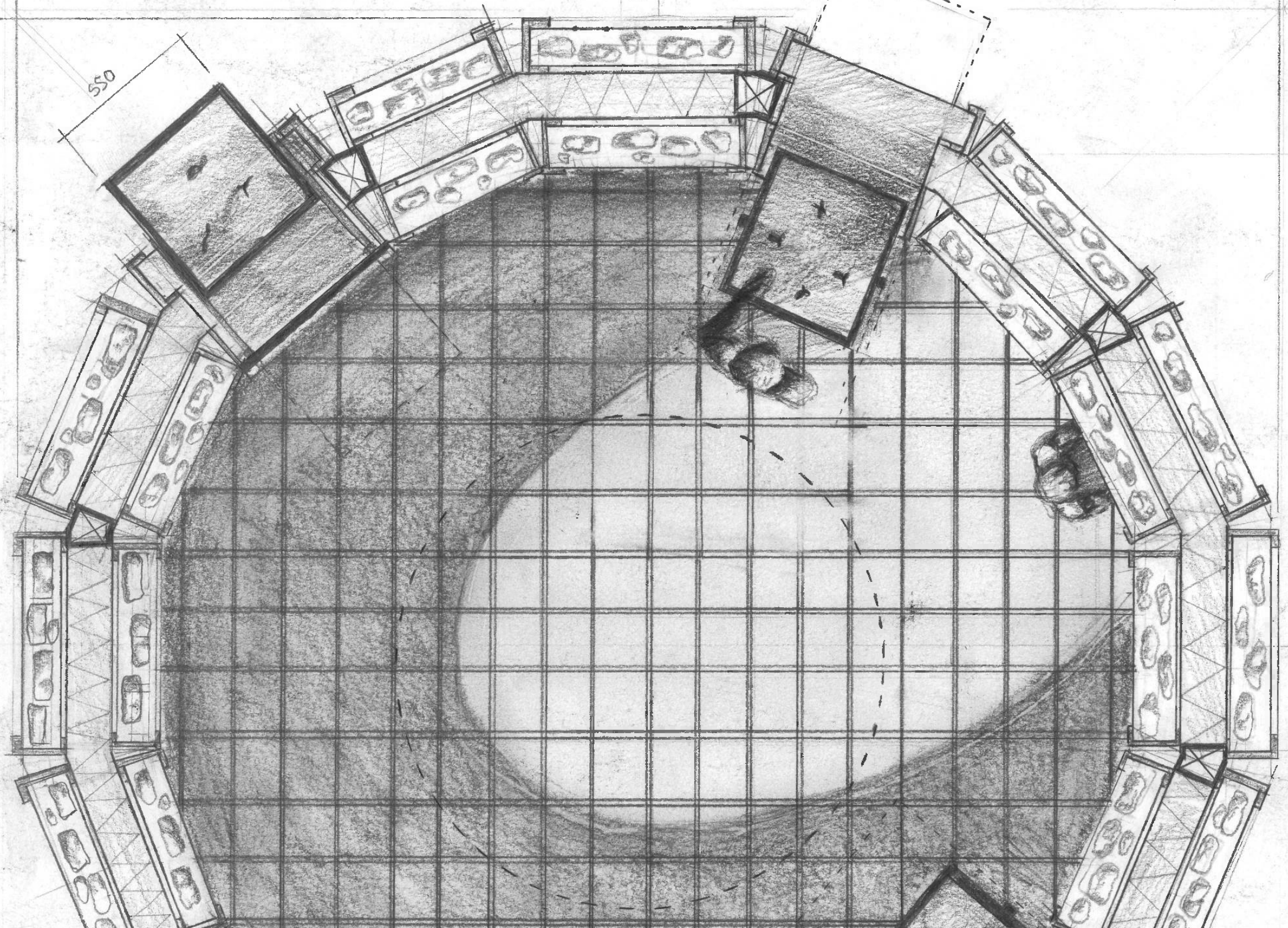
Choreographic object performed through tram network, Chemnitz

≈ Conversation with Network Rail

≈ 'Wild habitat resource', Joseph Marsden



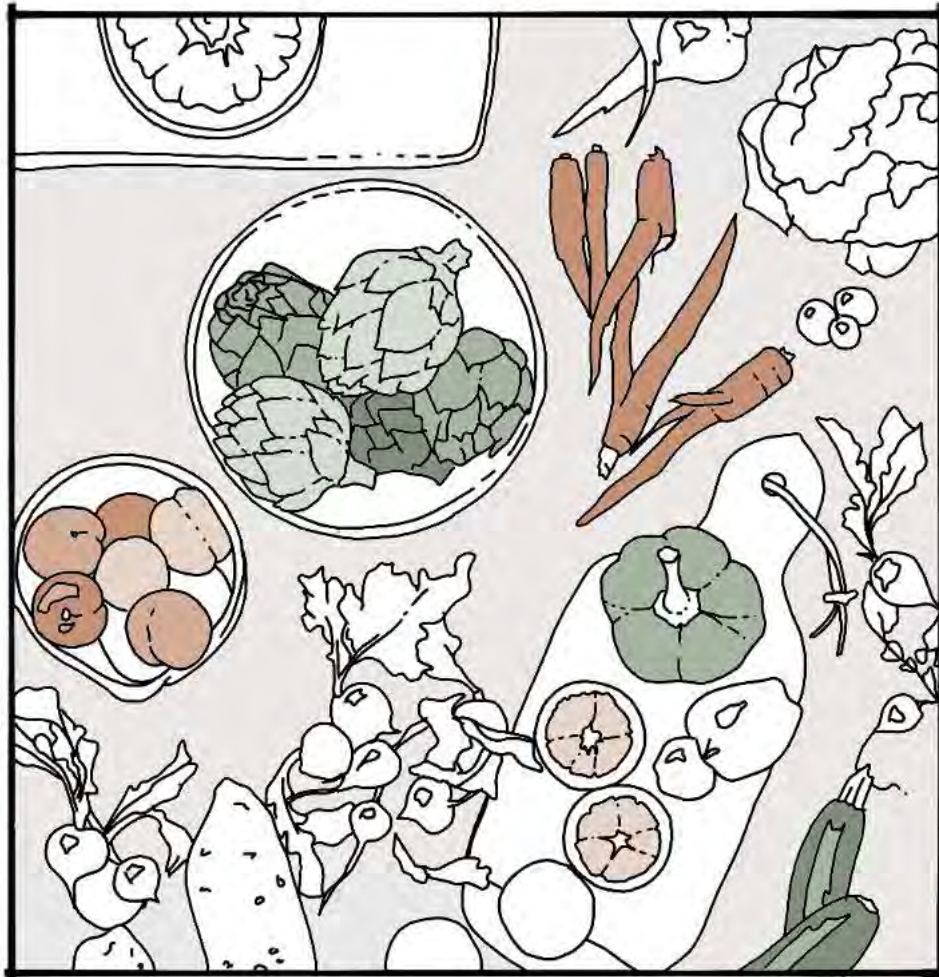




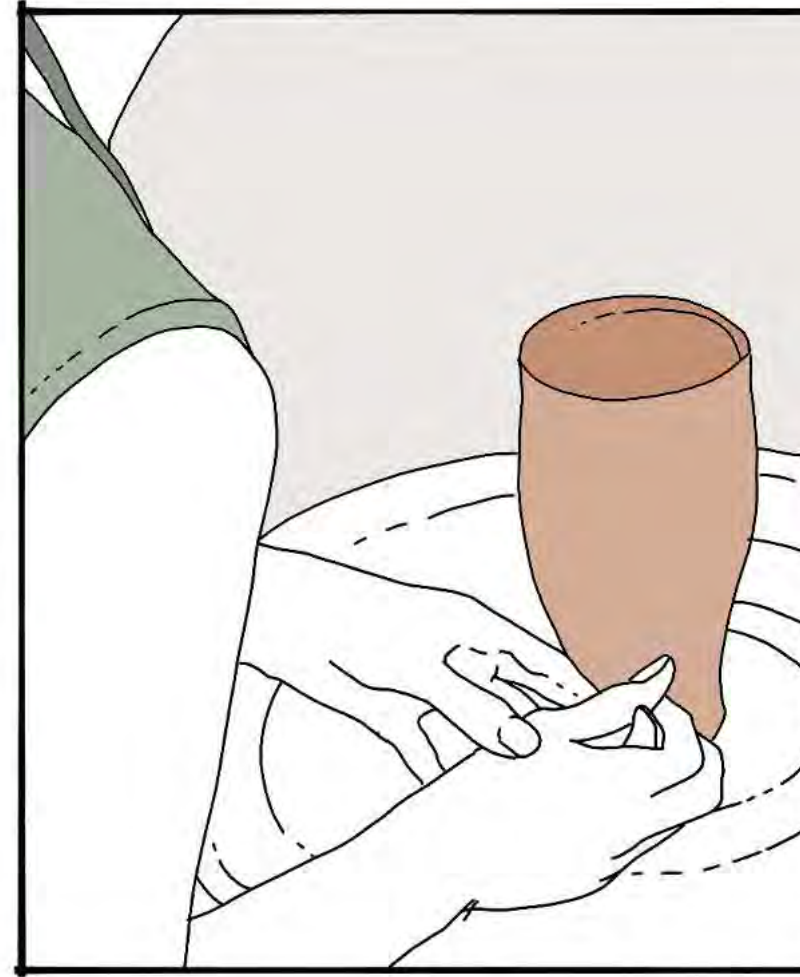
550



DRAMICS & LEARNING



COLLABORATION KITCHEN



MAKING, WATCHING, COLLABORATING

Performing choreographic object, Chemnitz

⌘ 'Clay forge', Hannah Goodrich

≈ Sketch for composting stair, Mayfield, Jessica Bell







Choreographic object performed through tram network, Chemnitz
≈ Performing choreographic object, meth lab garden





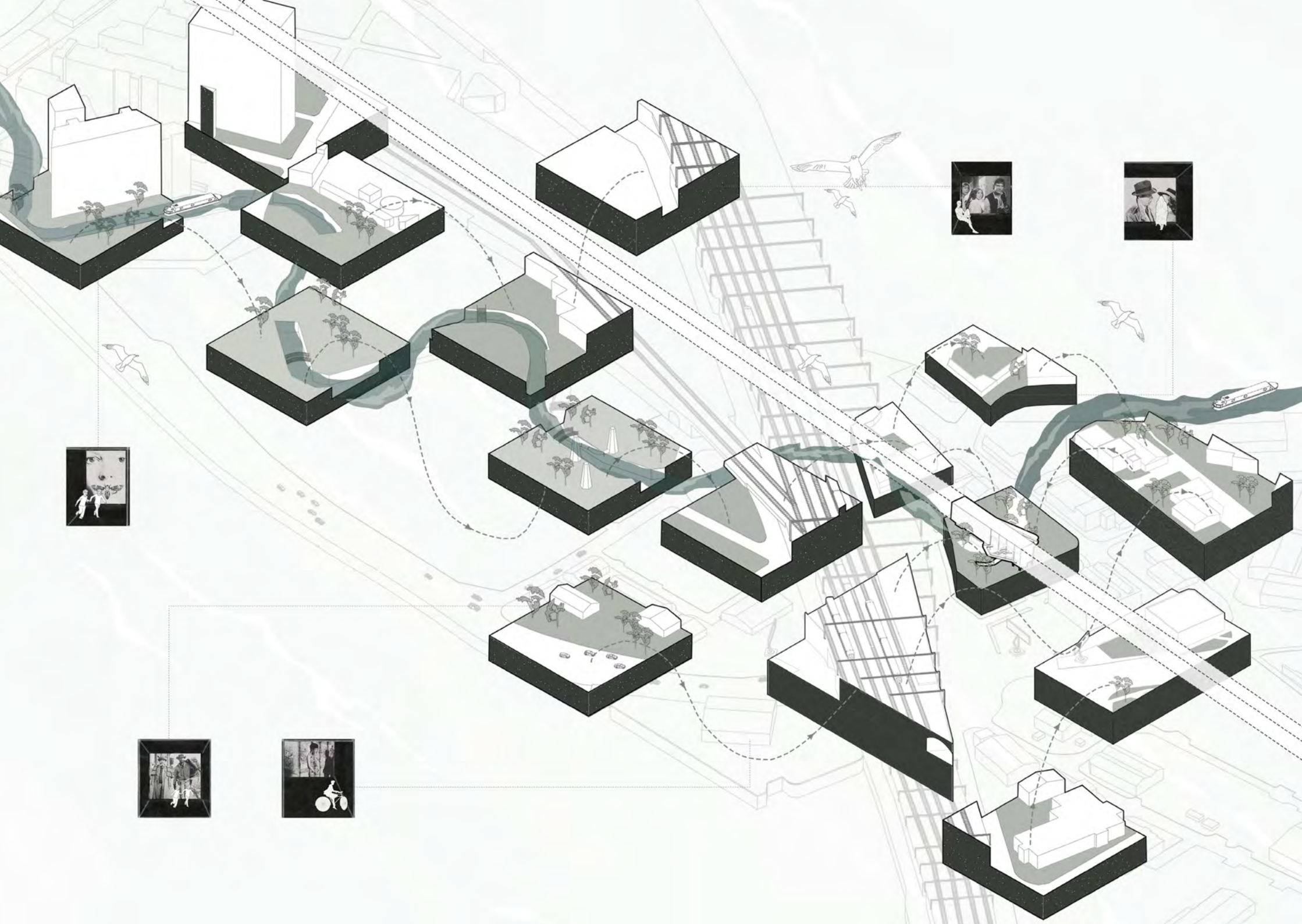




Awakenings, collage, Silvia Nedyalkova

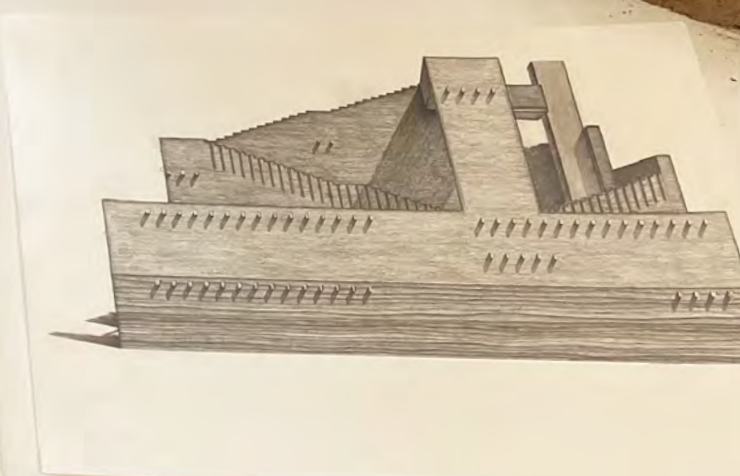
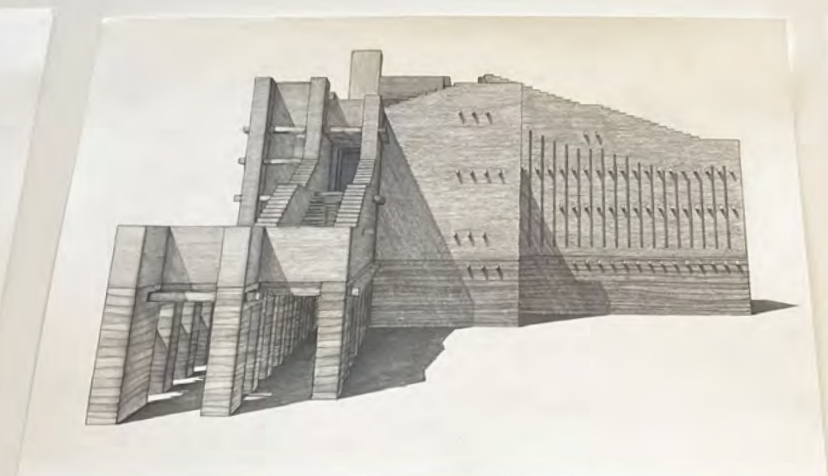
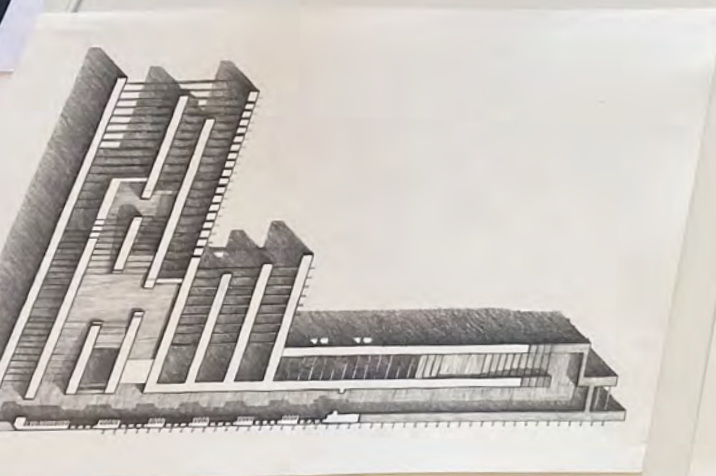
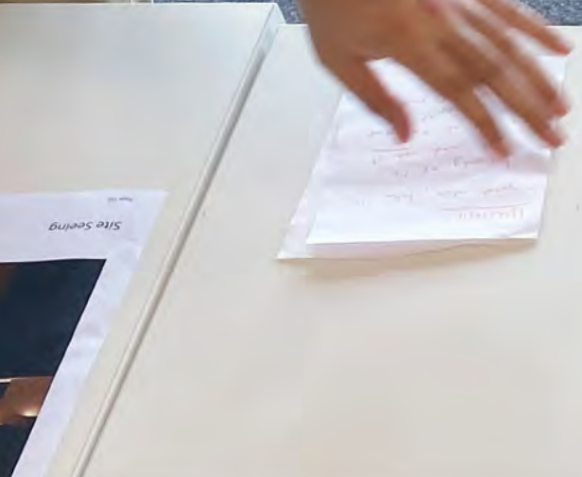
Choreographic object performed through tram network, Chemnitz
≈ 'Kino Archipelago', Ana Plesa

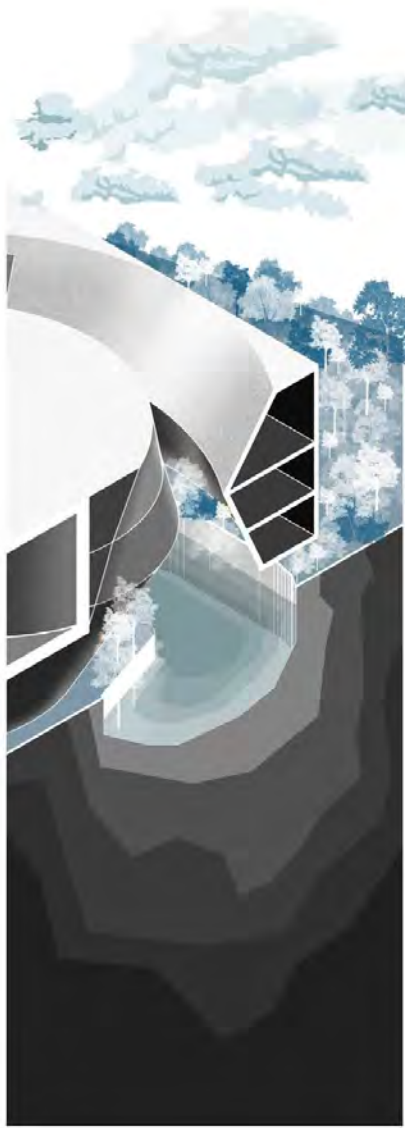




Performing choreographic object, Brühl
≈ 'Mayfield Drift', Mohamed Harfoush
≈ 'Inverting Mayfield', Silvia Nedyalkova



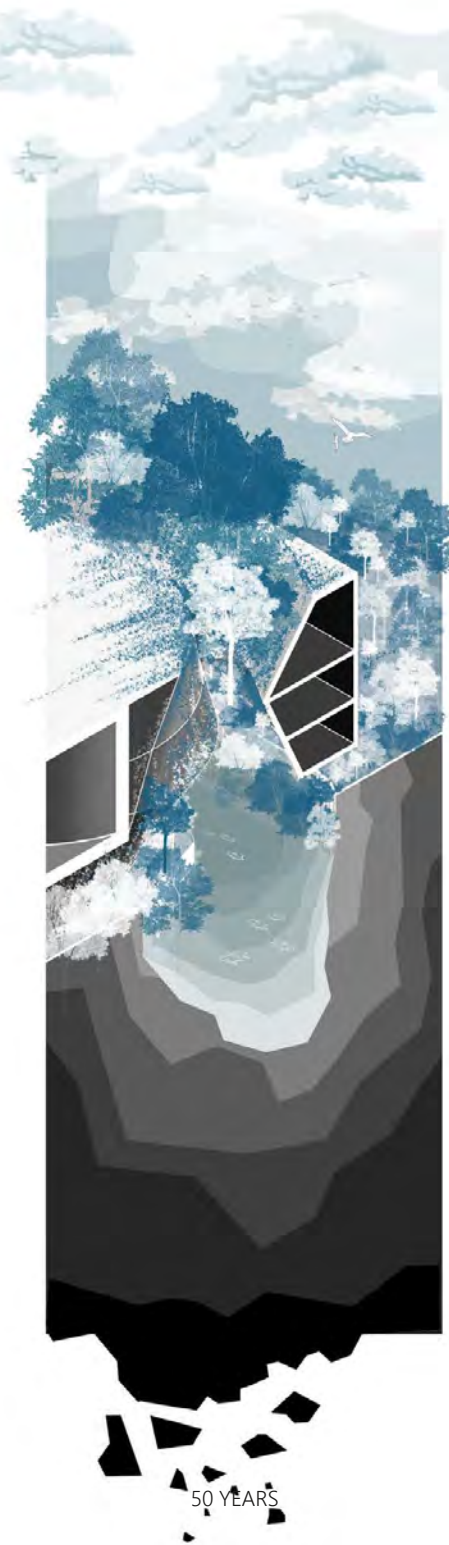




PRESENT



20 YEARS



50 YEARS



∞ YEARS

**SPECIES
AND
TEMPORALITY**

FLUX EXHIBITION

17th NOVEMBER ALL-DAY



Garagen Campus

≈ Design discussion, FLUX studio





'Public changing rooms', Zhiyuan Xie
≈ Conversation with Mayfield developers



General Masterplan

Site Plan

Conceptual Drawing

Site Plan

Site Plan

Site Plan

Site Plan

Site Plan

Site Plan

Site Plan

Site Plan

Site Plan

Site Plan

Site Plan

Site Plan

Site Plan

General Masterplan

Site Plan

Conceptual Drawing

Site Plan

Site Plan

Site Plan

Site Plan

Site Plan

Site Plan

Site Plan

Site Plan

Site Plan

Site Plan

Site Plan

Site Plan

Site Plan

General Masterplan

Site Plan

Conceptual Drawing

Site Plan

Site Plan

Site Plan

Site Plan

Site Plan

Site Plan

Site Plan

Site Plan

Site Plan

Site Plan

Site Plan

Site Plan

Site Plan

General Masterplan

Site Plan

Conceptual Drawing

Site Plan

Site Plan

Site Plan

Site Plan

Site Plan

Site Plan

Site Plan

Site Plan

Site Plan

Site Plan

Site Plan

Site Plan

Site Plan

General Masterplan

Site Plan

Conceptual Drawing

Site Plan

Site Plan

Site Plan

Site Plan

Site Plan

Site Plan

Site Plan

Site Plan

Site Plan

Site Plan

Site Plan

Site Plan

Site Plan

General Masterplan

Site Plan

Conceptual Drawing

Site Plan

Site Plan

Site Plan

Site Plan

Site Plan

Site Plan

Site Plan

Site Plan

Site Plan

Site Plan

Site Plan

Site Plan

Site Plan

General Masterplan

Site Plan

Conceptual Drawing

Site Plan

Site Plan

Site Plan

Site Plan

Site Plan

Site Plan

Site Plan

Site Plan

Site Plan

Site Plan

Site Plan

Site Plan

Site Plan

General Masterplan

Site Plan

Conceptual Drawing

Site Plan

Site Plan

Site Plan

Site Plan

Site Plan

Site Plan

Site Plan

Site Plan

Site Plan

Site Plan

Site Plan

Site Plan

Site Plan

General Masterplan

Site Plan

Conceptual Drawing

Site Plan

Site Plan

Site Plan

Site Plan

Site Plan

Site Plan

Site Plan

Site Plan

Site Plan

Site Plan

Site Plan

Site Plan

Site Plan

General Masterplan

Site Plan

Conceptual Drawing

Site Plan

Site Plan

Site Plan

Site Plan

Site Plan

Site Plan

Site Plan

Site Plan

Site Plan

Site Plan

Site Plan

Site Plan

Site Plan

General Masterplan

Site Plan

Conceptual Drawing

Site Plan

Site Plan

Site Plan

Site Plan

Site Plan

Site Plan

Site Plan

Site Plan

Site Plan

Site Plan

Site Plan

Site Plan

Site Plan

General Masterplan

Site Plan

Conceptual Drawing

Site Plan

Site Plan

Site Plan

Site Plan

Site Plan

Site Plan

Site Plan

Site Plan

Site Plan

Site Plan

Site Plan

Site Plan

Site Plan

General Masterplan

Site Plan

Conceptual Drawing

Site Plan

Site Plan

Site Plan

Site Plan

Site Plan

Site Plan

Site Plan

Site Plan

Site Plan

Site Plan

Site Plan

Site Plan

Site Plan

General Masterplan

Site Plan

Conceptual Drawing

Site Plan

Site Plan

Site Plan

Site Plan

Site Plan

Site Plan

Site Plan

Site Plan

Site Plan

Site Plan

Site Plan

Site Plan

Site Plan

General Masterplan

Site Plan

Conceptual Drawing

Site Plan

Site Plan

Site Plan

Site Plan

Site Plan

Site Plan

Site Plan

Site Plan

Site Plan

Site Plan

Site Plan

Site Plan

Site Plan

General Masterplan

Site Plan

Conceptual Drawing

Site Plan

Site Plan

Site Plan

Site Plan

Site Plan

Site Plan

Site Plan

Site Plan

Site Plan

Site Plan

Site Plan

Site Plan

Site Plan

General Masterplan

Site Plan

Conceptual Drawing

Site Plan

Site Plan

Site Plan

Site Plan

Site Plan

Site Plan

Site Plan

Site Plan

Site Plan

Site Plan

Site Plan

Site Plan

Site Plan

General Masterplan

Site Plan

Conceptual Drawing

Site Plan

Site Plan

Site Plan

Site Plan

Site Plan

Site Plan

Site Plan

Site Plan

Site Plan

Site Plan

Site Plan

Site Plan

Site Plan

General Masterplan

Site Plan

Conceptual Drawing

Site Plan

Site Plan

Site Plan

Site Plan

Site Plan

Site Plan

Site Plan

Site Plan

Site Plan

Site Plan

Site Plan

Site Plan

Site Plan

General Masterplan

Site Plan

Conceptual Drawing

Site Plan

Site Plan

Site Plan

Site Plan

Site Plan

Site Plan

Site Plan

Site Plan

Site Plan

Site Plan

Site Plan

Site Plan

Site Plan

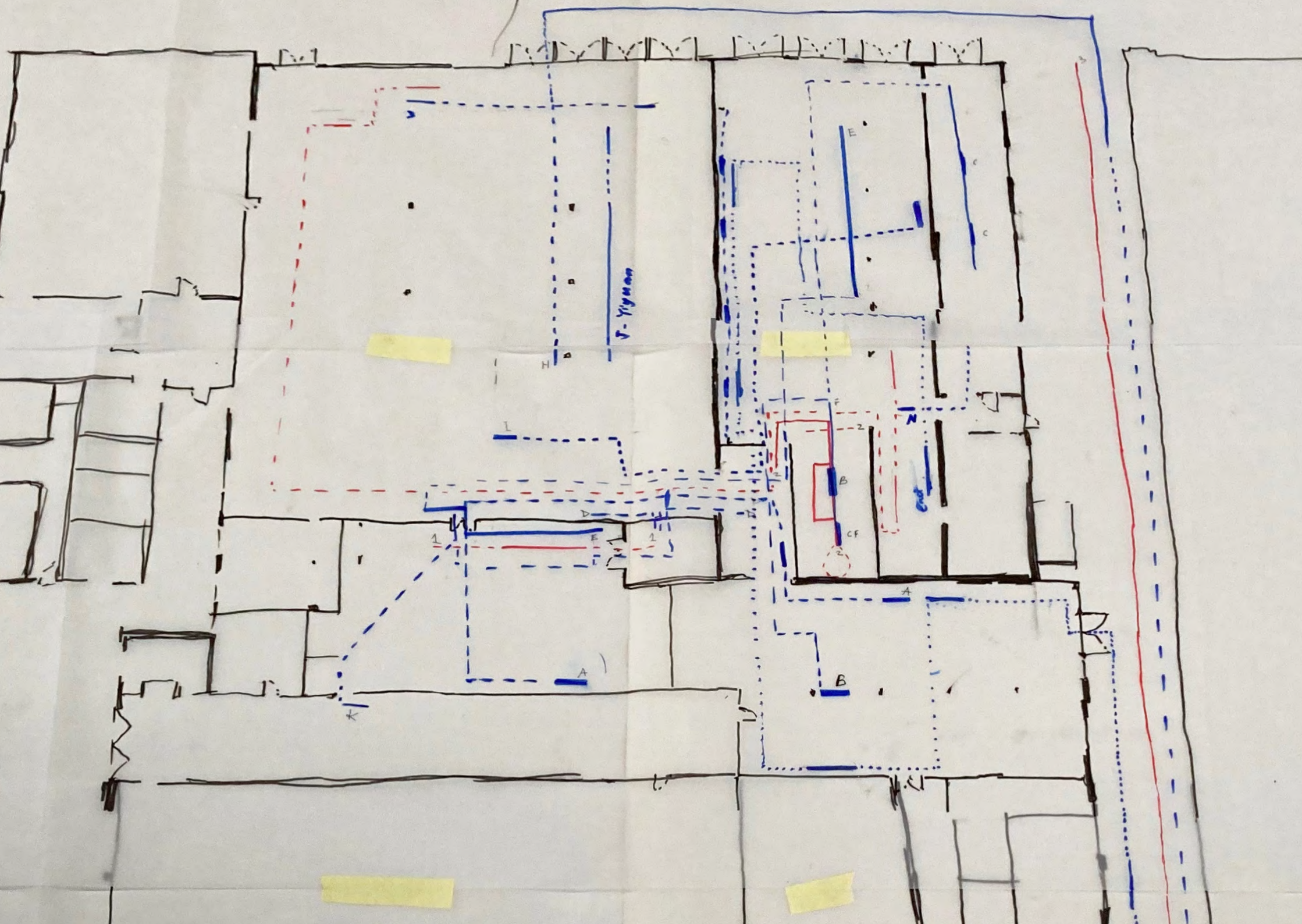
General Masterplan

Site Plan



≈ Performance script, choreographic object











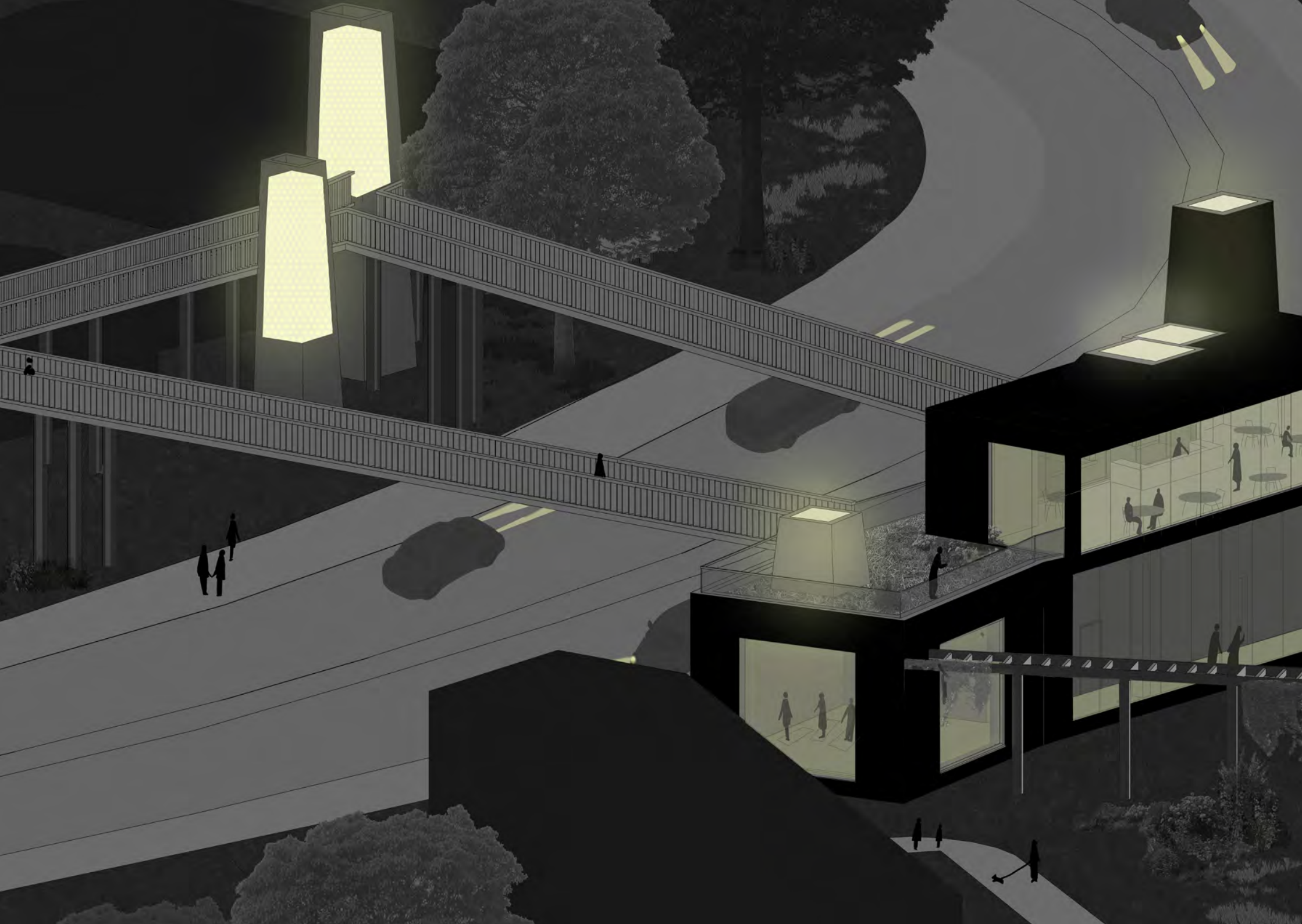
Taxonomy of lines, Mayfield
≈ Atmospheres, Mayfield



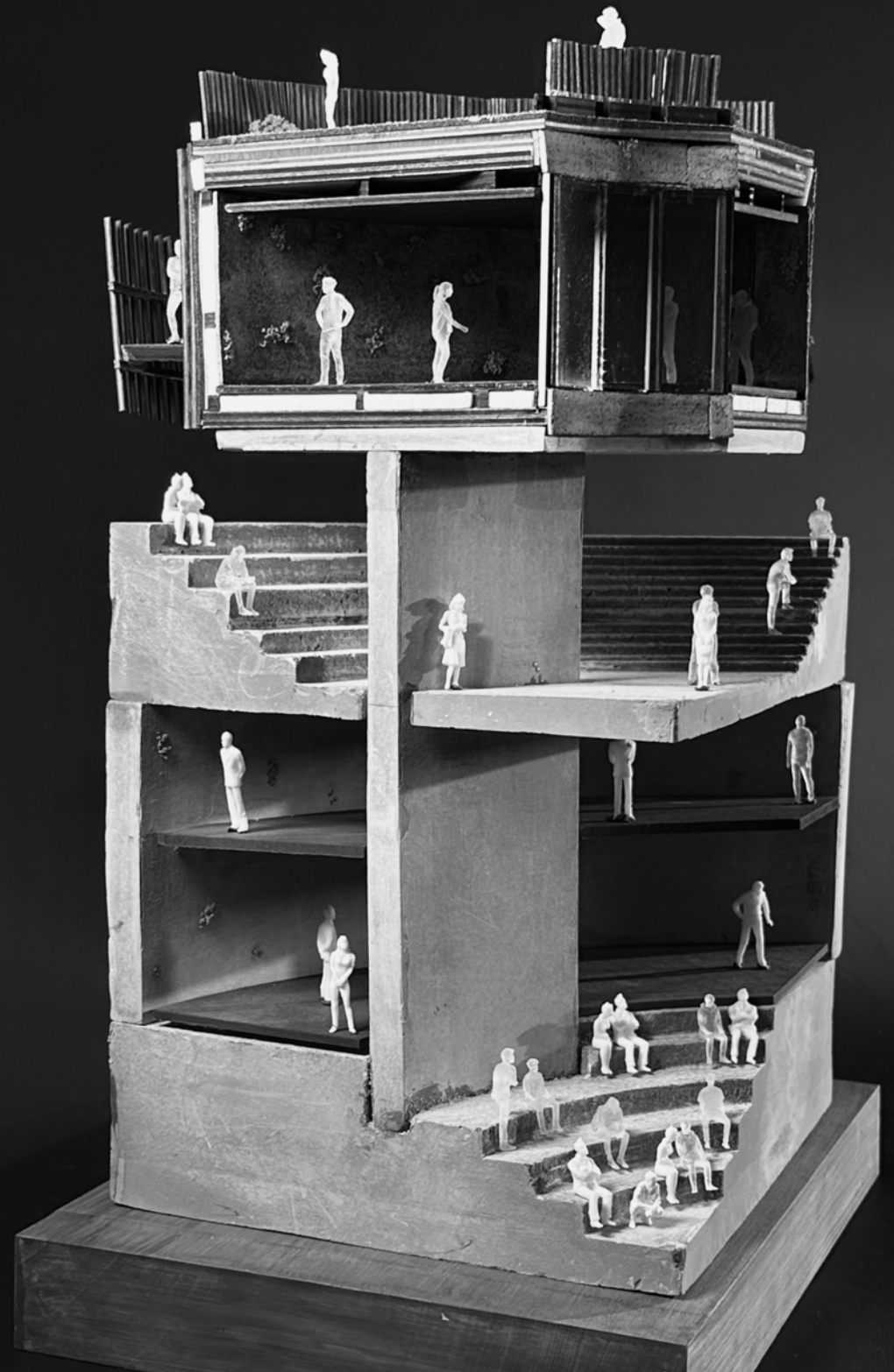


The Foundry, Chemnitz

≈ 'Archipelago of tranquility', Laura Blazyte

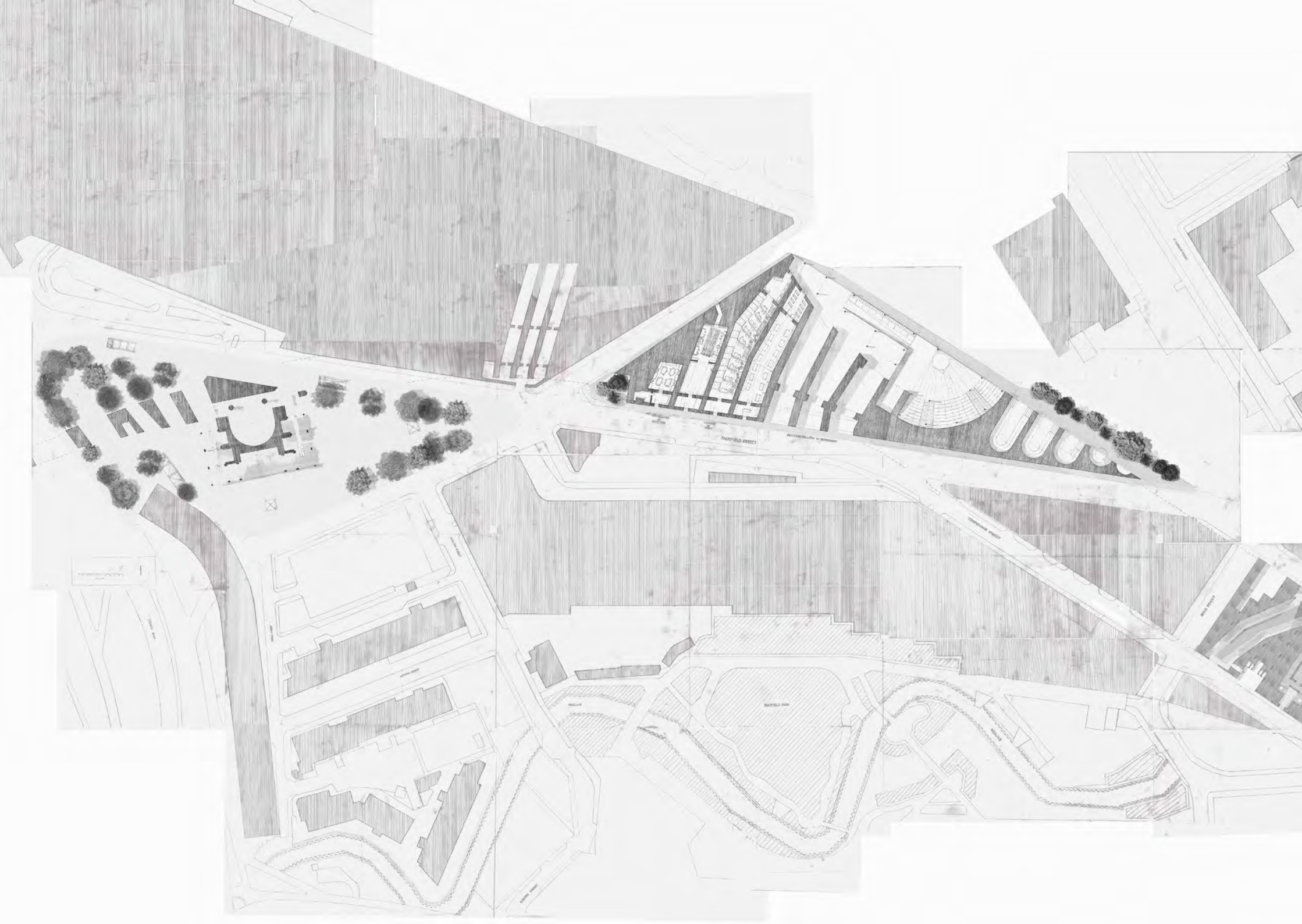


'Conticinio', model, Natasha Nedelcu
≈ Atmospheres, Mayfield







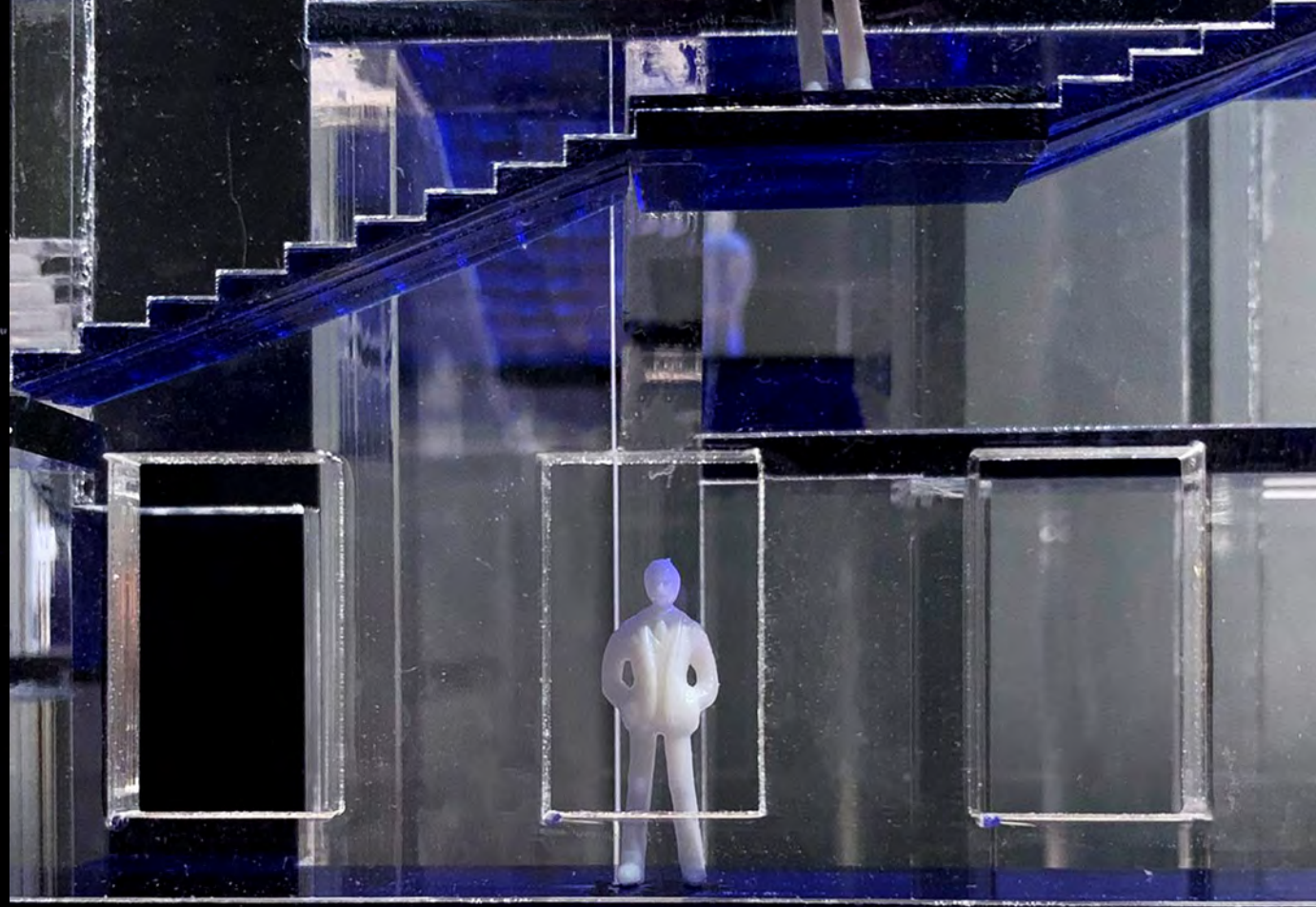
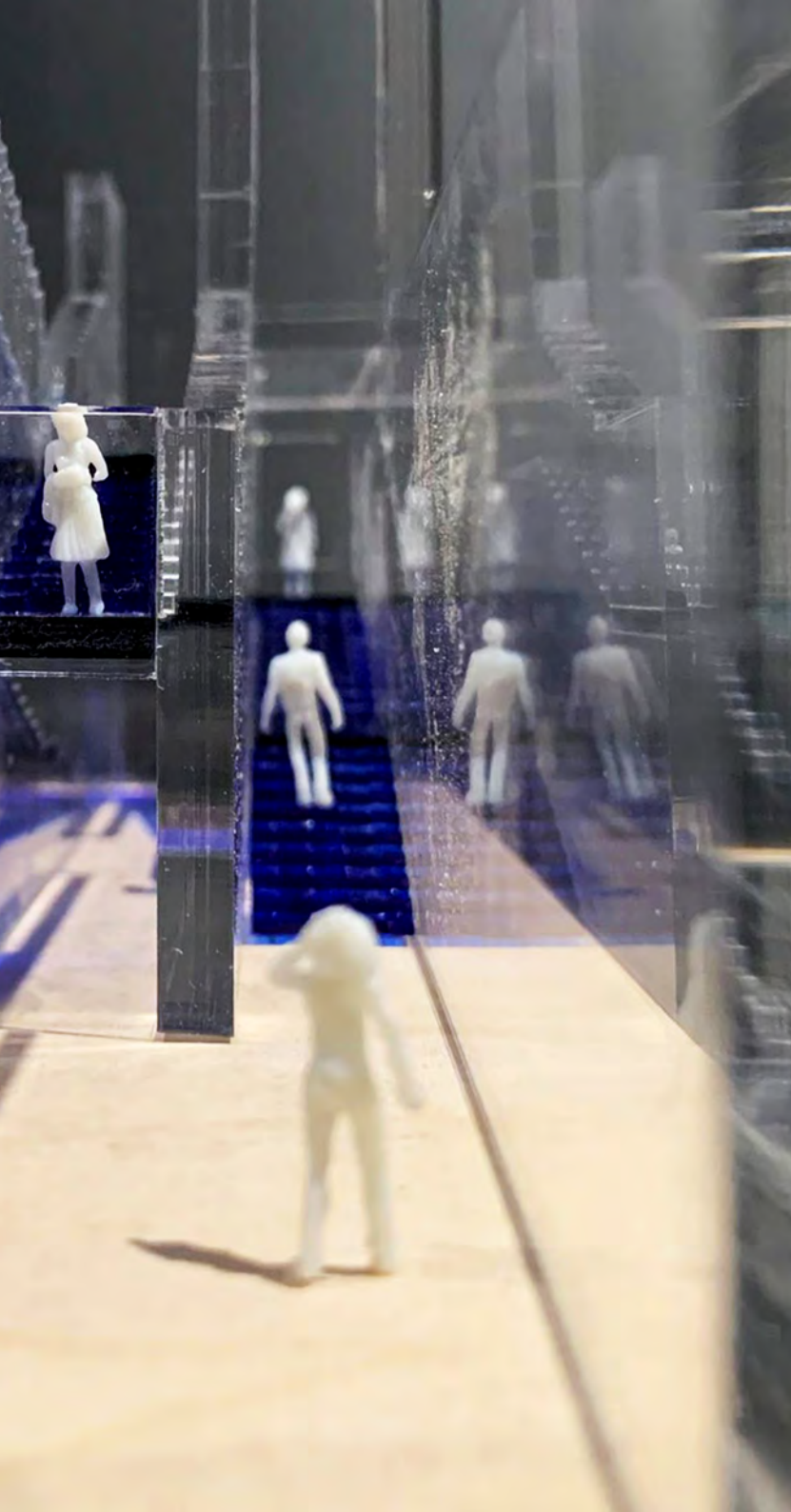




Proposal for interim living accommodation, Mayfield, Hannah Goodrich

≈ 'Egalitarian archipelago', drawing, Jan Laming

≈ 'Mayfield Drift', model, Mohamed Harfoush

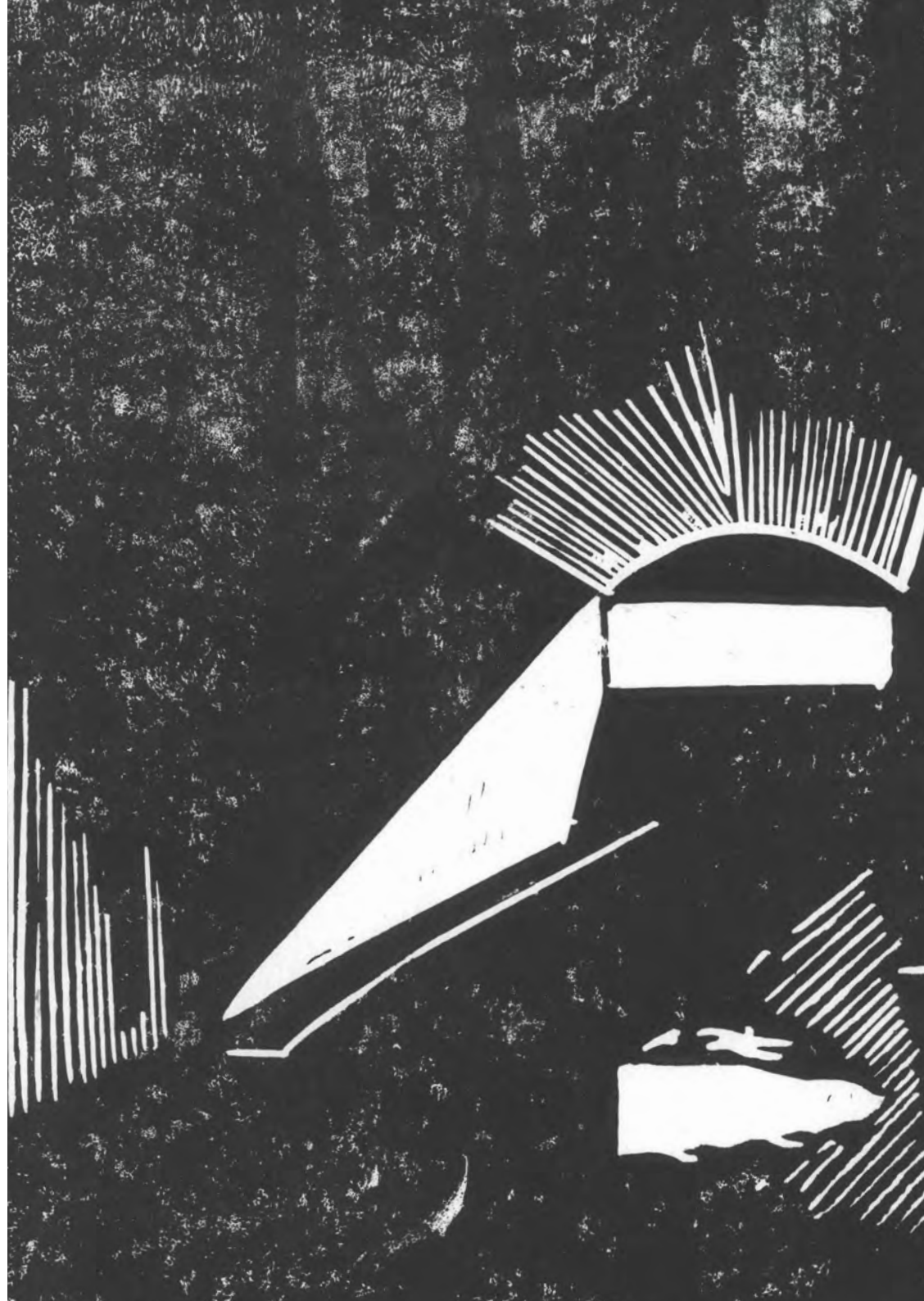




≈ Atmospheres, Mayfield



'Egalitarian archipelago', lino print, Jan Laming





Entering Bacterial Tunnel, Chemnitz
≈ 'Egalitarian archipelago', Jan Laming







Atelier FLUX

BA3 (year 3)

Alessandra Baroni
Laura Blazyte
Evan Chandler
Ruby Lok Hei Chang
Charlotte Ellis
Louis Louth
Afraa Mahgob
Cyrus Navabi Marks
Joseph Marsden
Maria Nastase
Natasha Nedelcu
Silvia Nedyalkova
Ana Plesa
Jakub Rammel
Adriana Sokolova
Hadiza Tafida
Sasina Thaiwatana
Haziq Abdul Wahab
Han Xu
Haoqing Xu
Ana Zagnat

MArch1 (year 5)

Nurul Izzati Ahmad Jamal
Omar Arif
Yiyuan Cao
Ho Ching Chan
Pei Ying Chen
Zhe Chen
Sanjidah Chowdhury
Theo Fisher
Hannah Goodrich
Aye Eindra Lin
Mengxuan Liu
Zemao Liu
Zherui Liu
Janhavi Narayanaswamy
Zitong Niu
Oluwafemi Olateju
Karolina Julia Olszewska
Mohammed Amin Patel
Neerzari Patel
Raj Pardeshi
Guy Pope
Francis Richardson
Yifan Si
Leona Somerville
Xin Shu
Pui Yin Tang
Ebrahim Variava
Yihuan Xu
Shimiao Zhang

MArch2 (year 6)

Anna Gleis
Jan Laming
Jessica Bell
Joanna Marie Bulaong
Jordan Hin Ho Wong
Kayla Dabu
Mohamed Harfoush
Natalia Fijalkowska
Raiyhan Alvi
Rebecca Skelton
Seyed Mirhosseini
Shadi Albaity
Uliana Serbinova
Vikas Parekh
Xiongzhe Shi
Zhiyuan Xie

Staff

Bernadette Bone
Zoe Bruce
Dan Dubowitz
José Hidalgo
Ray Lucas
Christopher Maloney
Loris Rossi
Ella Walklate
John Wood

External contributors

Martyn Evans (developer)
Sam Jarrett (developer)
Lloyd Preston-Allen (developer)
Vavara Papavasiliou (developer)
Helena Huws (Network Rail)
Patrick Duerden (architect)
Katherine McMahon (architect)
Rory Chisolm (architect)
Matthew Heyward (architect)
Swati Chattopadhyay (architectural historian)
Nick Dunn (urbanist)
Oren Lieberman (provocateur)
Charlie Curtis (philosopher / landscape architect)
Élisabeth de Bézenac (nighttime designer / photographer)
Helen Hough (environmental engineer)
Sam Hallas (information designer)

Chemnitz collaborators

Ulf Kallscheidt (European 2025 Capital of Culture)
Mattijs Maussen (European 2025 Capital of Culture)
Dirk Dobey (Age of Artists)
Tina Winkel (Garagen Kampus)
Marcus Bauerfeind (Chemnitz Kreatives)

All photographs and images made by FLUX students
and staff. Polaroids by Zoe Bruce.

Book designed by Dan Dubowitz and Sam Hallas.
Printed and bound by FLUX students with Lisa Lorenz.